



DEEP HARBOUR

DeepLink™

Product Overview

The Downhole Wet Connector is a robust, single-conductor electrical connector designed for reliable wet-mating in downhole environments. It facilitates secure connections through a 1/4" Tubing Encapsulated Cable (TEC), enabling efficient power and signal transmission in oil and gas completion systems. This connector supports multi-stab operations and features an adjustable landing force for precise deployment.

Benefits

- Enables workovers without retrieving the lower completion, reducing time and costs.
- Provides reliable electrical connectivity for real-time monitoring and control.
- High-pressure rating ensures performance in challenging downhole conditions.
- Adjustable features allow customization for specific well requirements.
- Stab-Through Liner Packer design gives versatility for liner packer selection
- RIH with live active upper gauges
- Large Bore & Tight Clearance enhancing intelligent wellbore operations

Qualification and Testing

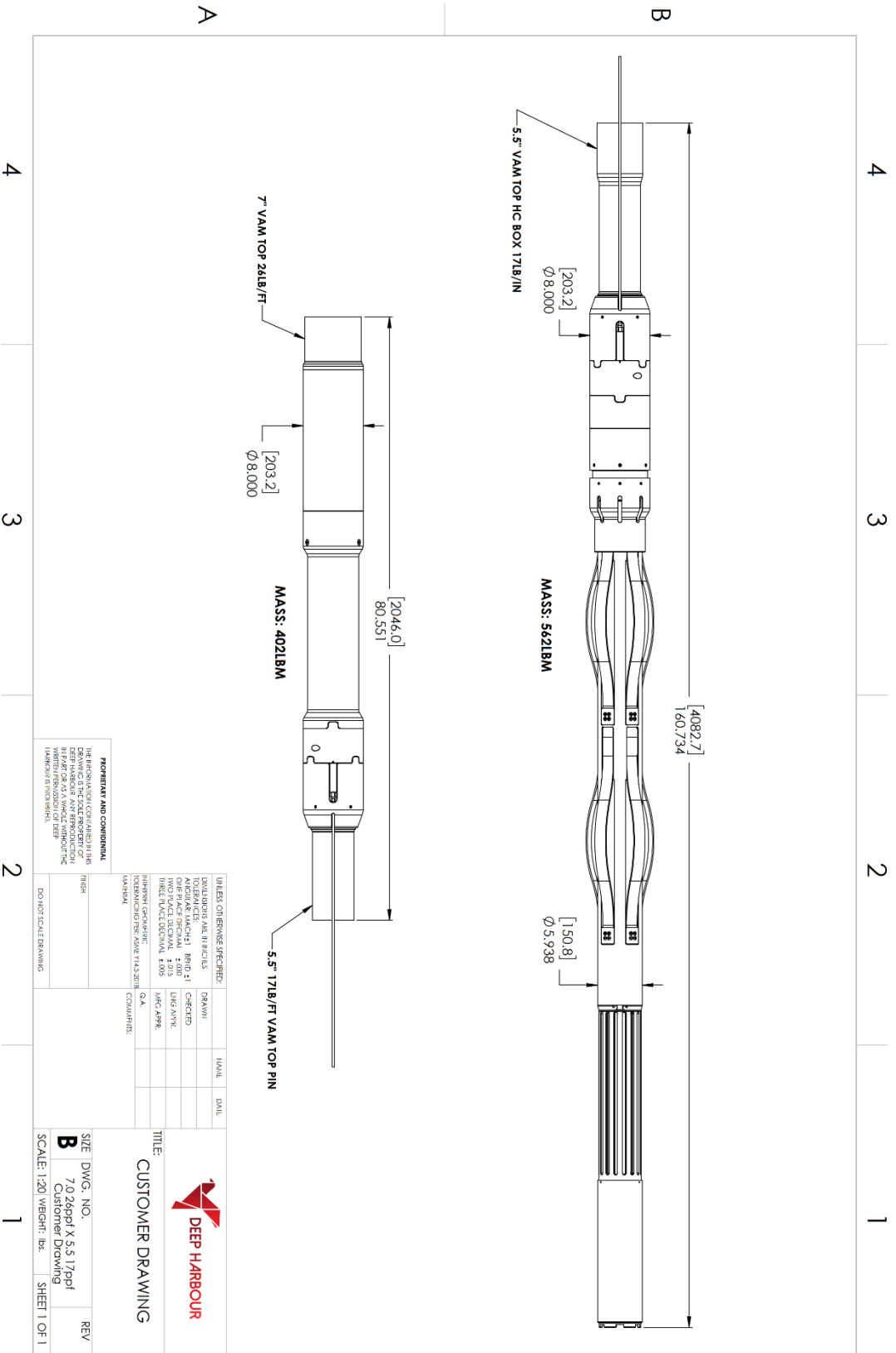
- Pressure and temperature cycling (up to 150°C).
- Mating cycles under pressure (10 stabs @ 150°C).
- Electrical Insulation, Continuity and Resistance in brine.
- Shear and landing force verification.
- **SEAFOM TSD-01**





Mechanical Specifications

Parameter	Value
Casing Size	Runs inside 9 5/8" casing up to 58.4 lb/ft
Casing weights	17, 23, 26 lb/ft
Pressure Rating (Working)	5,000 psi diff.
Pressure Rating (Maximum)	9,090 psi abs.
Landing Signature	50,000 lbf (2,060 lbf increments)
Lower Sleeve Shear Force	10,400 lbf (800 lbf increments)
Upper Sleeve Shear Force	10,000lbf (including seal friction and shear screws)
O.D.	8.00" (203.2mm)
Upper Connector ID	4.50" (114.3mm)
Lower Connector ID	4.895" (124.3mm)
Upper O.A.L.	160.72" (4.082m) (Adjusted to Liner Packer Length)
Lower O.A.L.	80.536" (2.045m) (Longer Custom Space-out Available)
Materials	All 13Cr construction with 80 ksi yield strength; housing and components in high-strength 13Cr alloys. All elastomers FFKM. Other materials PEEK, PTFE, Inconel X-750, Inconel 718
Splice Sealing System	Quadruple Metal-to-metal & FFKM seals
Mating Cycles	10 Stabs
Connections	Upper Connector: 5.5" 20 lb/ft VAM Top HC Box Lower Connector Top: 7.0" 26 lb/ft VAM Top Pin Lower Connector Bottom: 5.5" 20 lb/ft VAM Top Pin (Other connections available upon request)



IMPORTANT AND CONFIDENTIAL
 THE INFORMATION CONTAINED IN THIS DRAWING IS THE SOLE PROPERTY OF DEEP HARBOUR AND IS NOT TO BE REPRODUCED OR TRANSMITTED IN ANY FORM OR BY ANY MEANS WITHOUT THE WRITTEN PERMISSION OF DEEP HARBOUR.

UNLESS OTHERWISE SPECIFIED:
 DIMENSIONS SHALL BE IN INCHES
 TOLERANCES:
 FINISH: AS FURNISHED
 SURFACE FINISH: 32 RINCH
 TWO PLACE DECIMAL 1.013
 THREE PLACE DECIMAL 1.015
 FINISHING REQUIREMENTS:
 POLISHING AND BUFFING TO 14.520118
 UNLESS OTHERWISE SPECIFIED:
 DRAWN: []
 CHECKED: []
 DESIGNED: []
 INCH APPR: []
 Q.A. []
 COMMENTS:

SIZE: DWG. NO. **B**
 7.0 26ppt X 5.5 17ppt
 Customer Drawing
 SCALE: 1:20 WEIGHT: lbs. SHEET 1 OF 1

REVISIONS:
 REV. NO. DESCRIPTION
 1.0 []

TITLE: **CUSTOMER DRAWING**

DEEP HARBOUR

4 3 2 1

Electrical Specifications

Parameter	Value
Conductor Type	Single conductor via 16AWG 1/4" TEC
Resistance	2 Ohm (through upper and lower receptacles in brine)
Resistance after 10 stabs	3 Ohm (through upper and lower in brine)
Voltage/Current Rating	1000VDC / 5A
Contact Method	Direct Electrical Stab Connection

